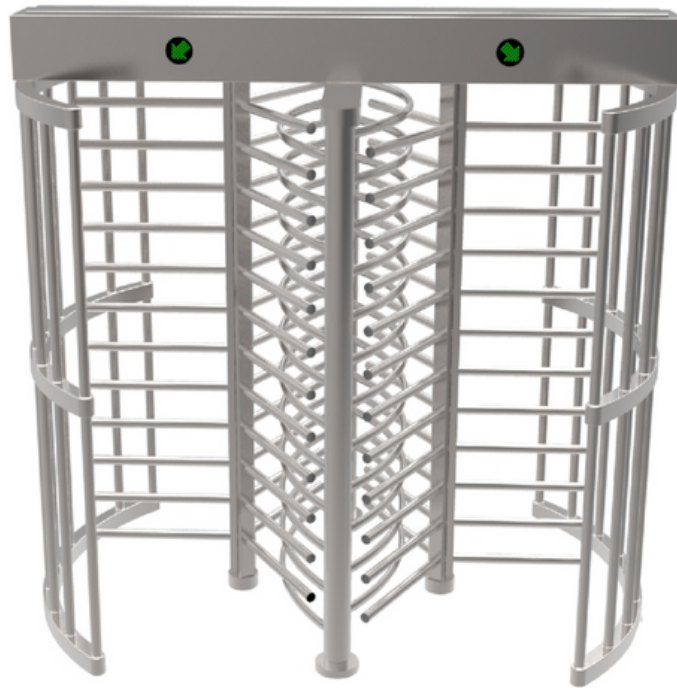


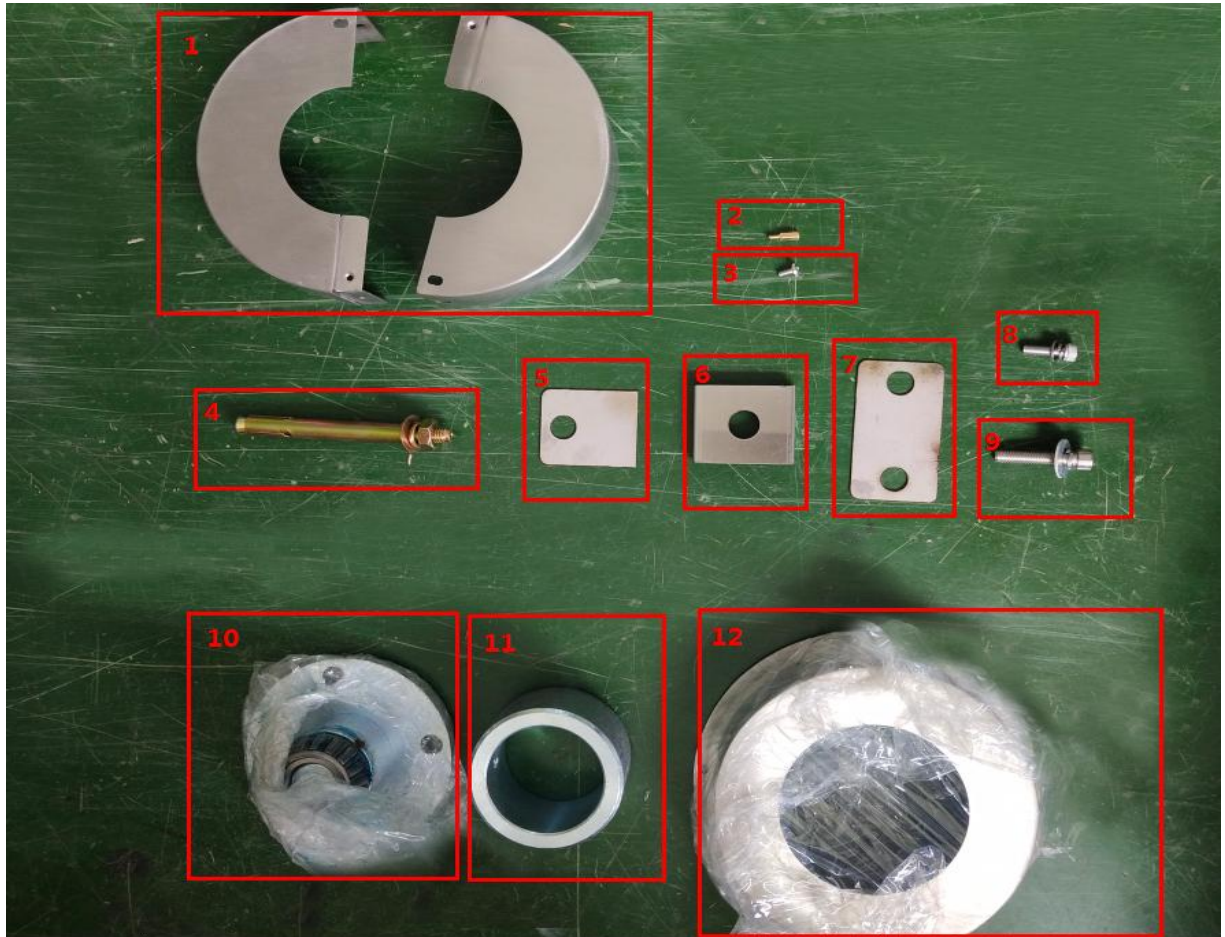


**Elefine**



# **Full Height Turnstile Quick Installation Guide**

## Arrange Below installation accessories first



### Material details:

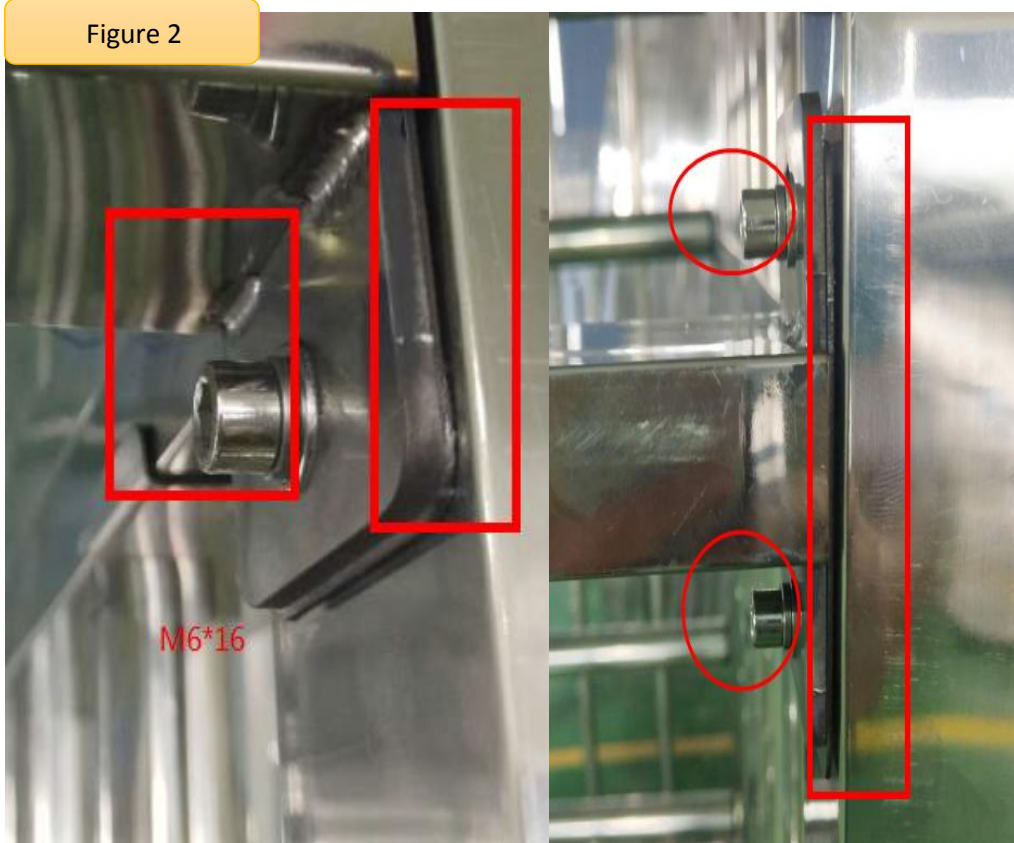
1	The base cover	2	Nut column	3	The M4 screw
4	M10 expansion screw	5	Gasket 1	6	Block slice
7	gasket	8	M6 * 16 screw	9	M8 * 40 screw
10	Bearing pedestal	11	The sleeve	12	On the cover

Figure 1

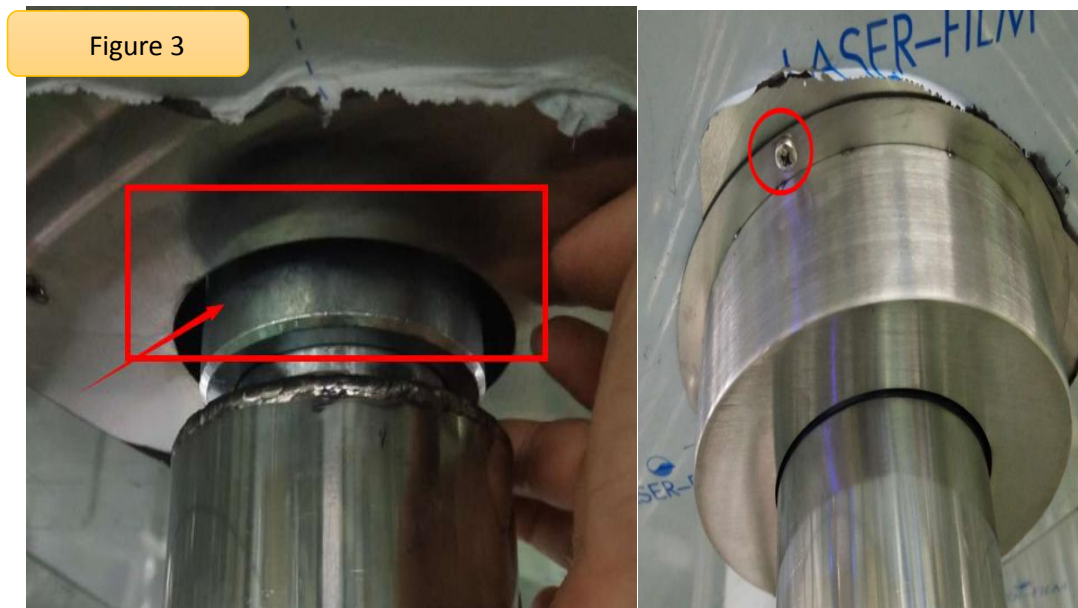


The first step; Use M8\*40 hexagon socket screw (9) to add flat cushion spring washer and baffle plate (6) to install large guardrail and top box on both sides (Figure 1).

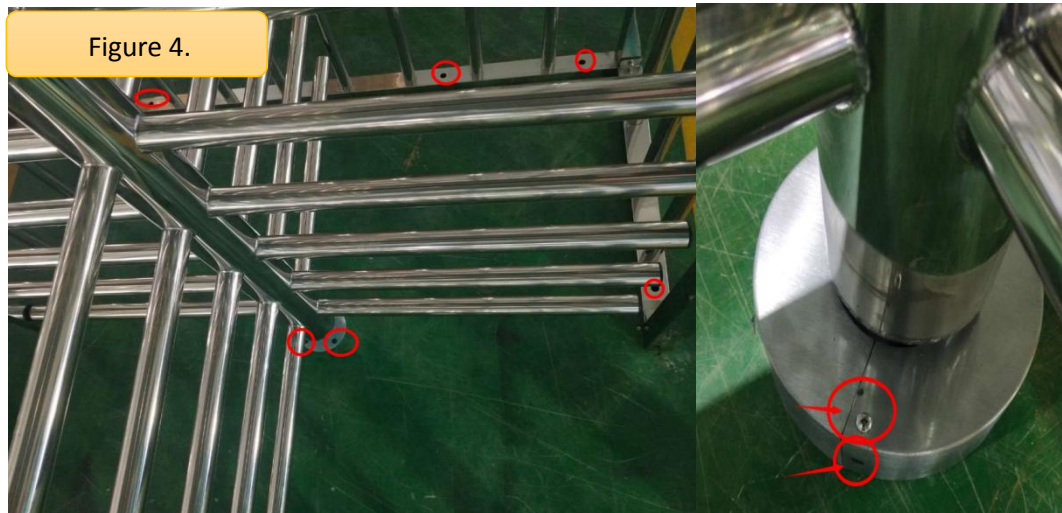
Figure 2



Step 2: Use M6\*16 screws (8) and baffle plates (5) and (7) to install the guardrail with card brush panel to the large guardrail (install one side first, install the other side after the middle rotary rod is installed) (Figure 2)



Step 3: Pre-place the sleeve (11) and upper cover (12) on the rotating rod, and then butt the rotating rod with the clamping slot of the movement. Then use three M4 screws (3) to install the upper cover on the top box, and install the bottom of the rotating rod on the bearing base (10) (Figure

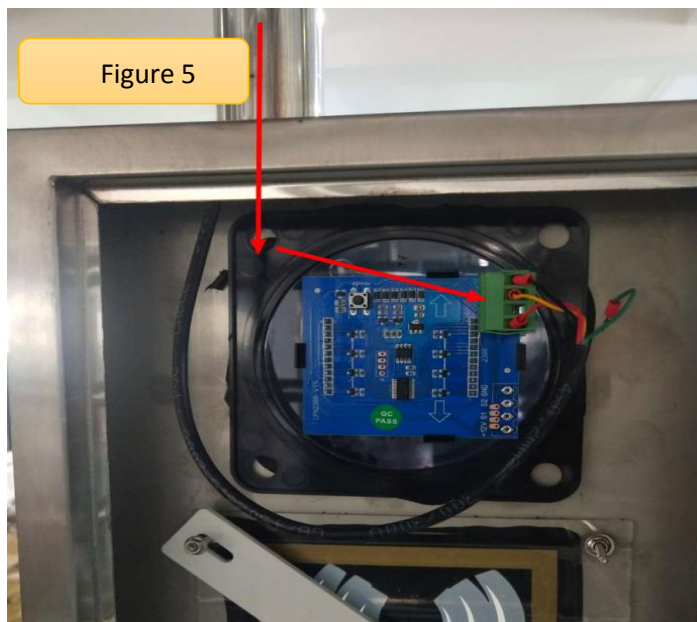


3).

Step 4: Mark 10 expansion screw holes for guardrail installation and 4 expansion screw holes for bearing base on the floor with marker pen.

After drilling, install the whole machine and tighten expansion screws (4).

Install base cover (1) with M4 screws (Figure 4).



Step 5: Connect the indicator cable through the top box and the inner wall of the guardrail pipe to the installation box of the guide reading head, and connect the terminal (Figure 5)

